

Olcott Harbor Changes

Olcott Harbor has undergone significant changes in the configuration of our harbor entrance after extensive modifications during the summer and fall of 2021.

Please inform your members who may be using an updated chart plotter or have downloaded a recent chart from NOAA that there is a serious error with the depiction of the Olcott Harbor entrance. It is our concern these errors could result in tragic results, especially if one were navigating by these updates in reduced visibility. Enclosed are three attachments. #1 shows the NOAA depiction, #2 shows what Navionics chart plotters, and #3 "Notice to Mariners" attachment shows what Olcott Harbor entrance actually looks like.

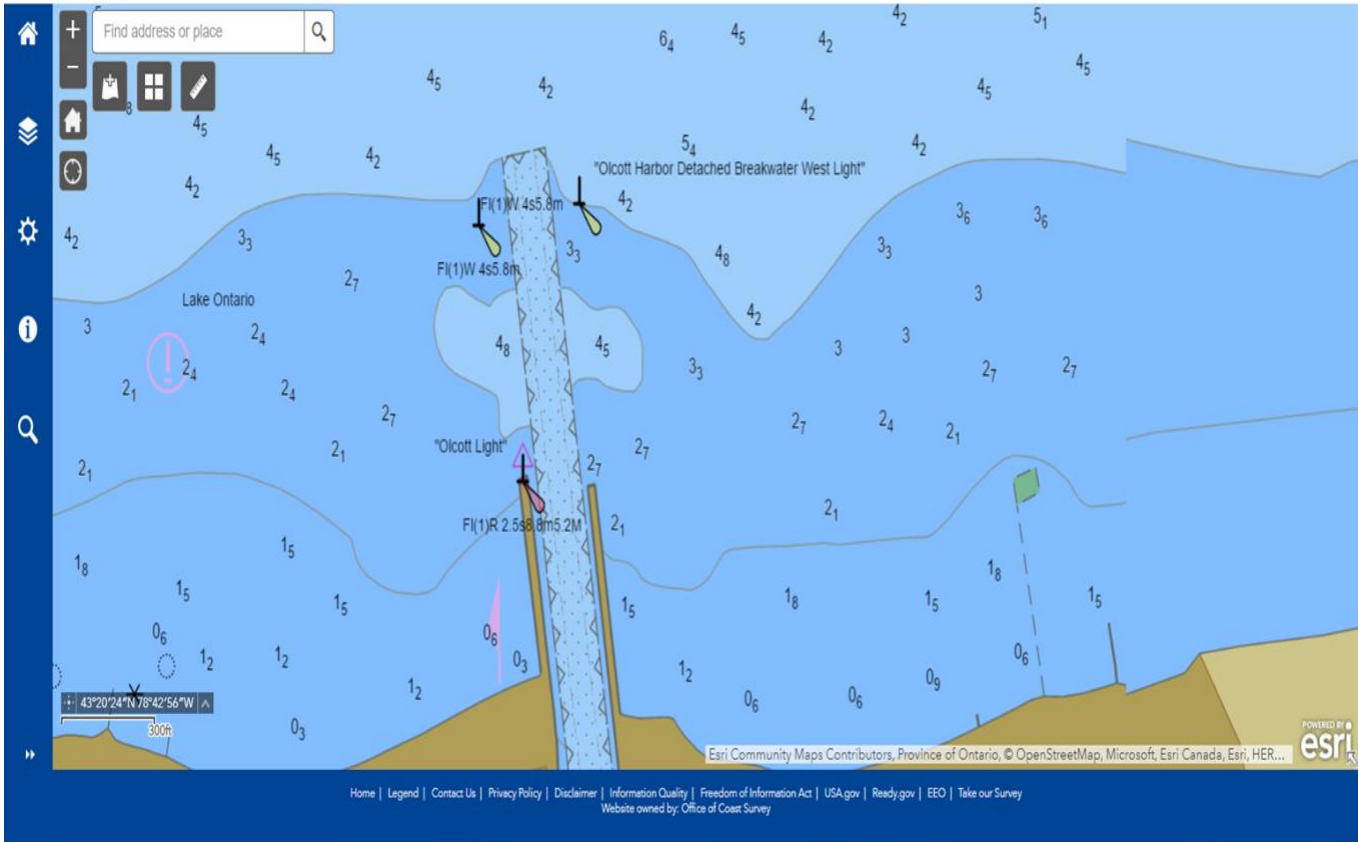
The NOAA and Navionics's chart show the channel entrance running straight through the heart of the newly constructed rock break wall. Any mariner following those routes would certainly meet with disaster.

It is our hope to avoid such a disaster.

If you, or your members have any questions please contact me.

Joe Higgins
OYC Harbormaster
qghiggs@gmail.com





Esri Community Maps Contributors, Province of Ontario, © OpenStreetMap, Microsoft, Esri Canada, Esri, HER... 

[Home](#) | [Legend](#) | [Contact Us](#) | [Privacy Policy](#) | [Disclaimer](#) | [Information Quality](#) | [Freedom of Information Act](#) | [USA.gov](#) | [Ready.gov](#) | [EEO](#) | [Take our Survey](#)
Website owned by: Office of Coast Survey